

The background is a dark, almost black, marbled texture with intricate, vein-like patterns in shades of grey and light brown. The overall effect is elegant and sophisticated.

1 ONE
PARK CENTRAL
BY IMAN

UNLOCK YOUR
NEW LIFESTYLE AT
ONE PARK CENTRAL



IMAN DEVELOPERS BUILDING LEGACY SINCE 2016

- 01 **2016**
OXFORD VILLAS
- 02 **2017**
OXFORD RESIDENCES
- 03 **2019**
OXFORD RESIDENCES 2
- 04 **2021**
OXFORD BOULEVARD
- 05 **2022**
OXFORD 212
- 06 **2022**
OXFORD TERRACES

- 07 **2022**
OXFORD TERRACES 2
- 08 **2022**
THE GROVE
- 09 **2023**
OXFORD GARDENS
- 10 **2023**
10 OXFORD
- 11 **2023**
Gardens 2



WHY INVEST IN DUBAI?

Investing in Dubai's real estate market offers a compelling opportunity for several reasons. Firstly, the market has demonstrated steady growth over the years, providing a stable and profitable investment environment. Secondly, Dubai's strategic location at the intersection of Europe, Asia, and Africa positions it as a global business hub, drawing in a diverse range of tenants and buyers.



JVC IS THE IDEAL LOCATION FOR MODERN LIVING



10 km

MALL OF THE
EMIRATES



17 km

FROM
JUMRAH



2 km

DUBAI TOWER
LABOURY



36 km

GLOBAL
AMPHITHEATRE



19 km

SHUJUB
KHALIFA



3 km

SAFARI UNIVERSITY &
SARAFI SQUARE



20 km

DUBAI
EXPO CITY



6 km

DUBAI
HILLS MALL



2 km

DUBAI
BOTANICAL
GARDEN



16 km

TOP THE
WORLD



16 km

ONCOLOGY
HOSPITAL
LONDON



2 km

MEDICAL
PARKS &
HOSPITALS





EMBRACE URBAN ELEGANCE & LUXURY LIVING

Experience the pinnacle of luxury living at One Park Central, gracefully situated facing Central Park in JVC. This exceptional mixed-use architectural masterpiece effortlessly merges sophistication, innovation, and urban charm, seamlessly blending into its surroundings.

With an impressive array of over 60 premium amenities, including dedicated fitness and wellness facilities, alongside other exquisite offerings, One Park Central offers a realm of luxury through meticulously crafted Retail, Commercial, and Residential units, harmonizing convenience with opulence.



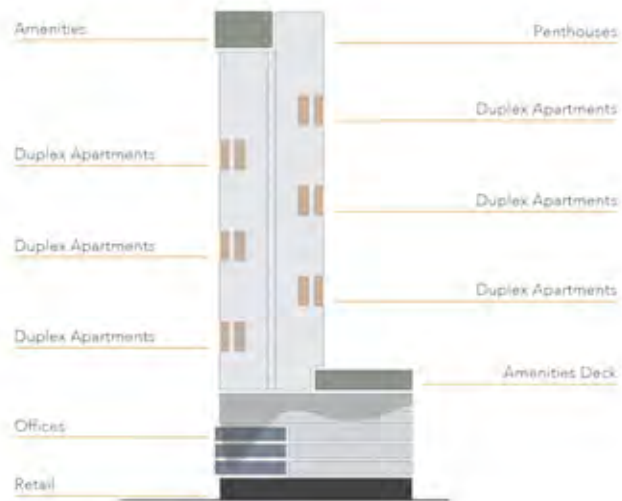
The background is a dark, almost black, marbled texture with intricate, vein-like patterns in shades of grey and white. A semi-transparent dark square is centered on the page, containing the text.

1 ONE
PARK CENTRAL
BY IMAN





ONE
PARK CENTRAL
BY IMAN



DESIGN STRATEGY

Exclusive amenities are combined in two zones and celebrated in a protruding structural expression. The building facade for duplexes has been designed to include a pool, while the 23rd floor features exquisitely designed penthouses.

TOTAL AMENITIES AREA 60,000 SQFT

BUILDING CONFIGURATION



ROOFTOP

Amenities

PENTHOUSES

23 FLOOR
RESIDENTIAL

AMENITIES DECK

5 PODIUM FLOORS WITH
COMMERCIAL SPACES

Lift lobby, parking

GROUND FLOOR

Main Entrance Lobby, Lift Lobby, Retail shops

BASEMENT

Underground parking, Lift Lobby



THE LOBBY



THE LOBBY



THE BEDROOM



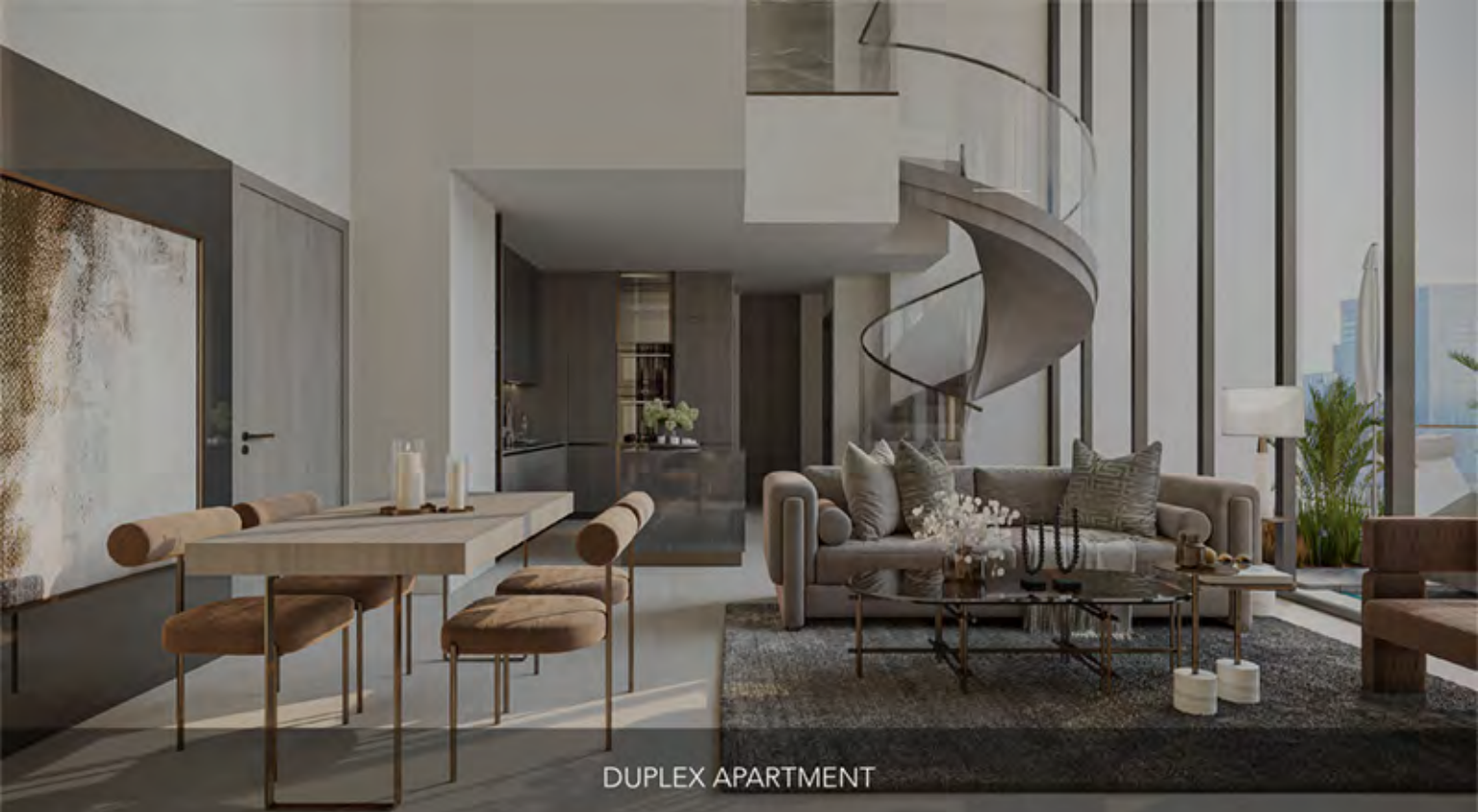
THE LIVING ROOM



THE BATHROOM



THE KITCHEN



DUPLEX APARTMENT



PENTHOUSE APARTMENT

RECHARGE,
REJOICE,
RECONNECT:
YOUR ULTIMATE RETREAT





AMENITIES DECK



35 M INFINITY POOL



ROOFTOP INFINITY POOL



CARDIO AREA



FIIT

583

| | |
|---|------|
| 1 | 1043 |
| 2 | 1043 |
| 3 | 1056 |
| 4 | 106 |
| 5 | 100 |
| 6 | 795 |
| 7 | 791 |
| 8 | 786 |
| 9 | 772 |

00:23 Fast Feet

795

166

425

INTERACTIVE FITNESS STUDIO



STRENGTH AREA



LIFE IS MORE
FUN WHEN
YOU PLAY
GAMES

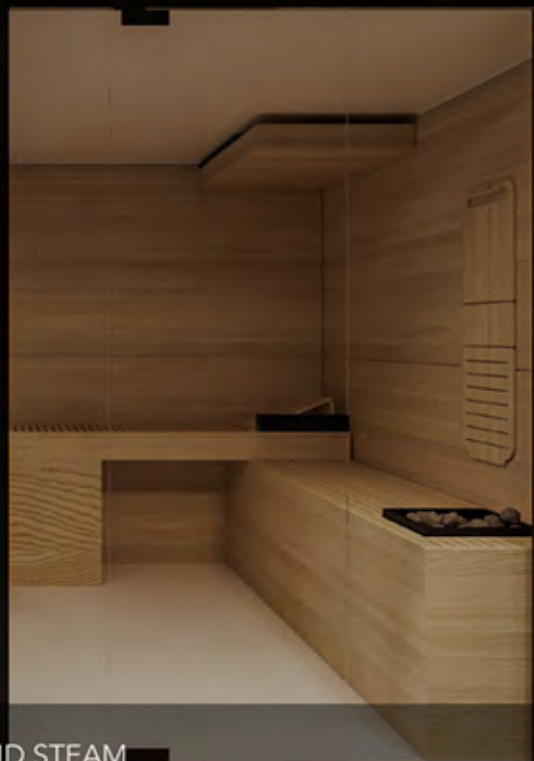
MULTI PURPOSE HALL



CO-WORKING SPACE



INDOOR VR GOLF



SAUNA AND STEAM



OUTDOOR YOGA



INDOOR KIDS PLAY AREA



KIDS POOL



PADEL TENNIS COURT



BASKETBALL COURT



SKATE PARK



BARBEQUE AREA



SPLASH PAD



GROUND FLOOR

- 1. Double Height Lobby
- 2. Lobby Lounge
- 3. Lobby Reception
- 4. Main / Office Entrance
- 5. Retail Parking
- 6. EV Charging Station
- 7. Retail Units
- 8. Lift Lobby
- 9. Parking Entrance & Exit
- 10. People Of Determination Parking



FIRST FLOOR

- | | | | | | |
|-----------------------|----------------------------|----------------------------------|--------------------------|----------------------------|---|
| 1. 30 m Infinity Pool | 8. Outdoor Kid's Play Area | 15. Gym Strength Area | 22. Male Changing Room | 29. Female Relaxation Area | 36. Pool Table |
| 2. Baja Shelf | 9. Padel Tennis Court | 16. Interactive Fitness Studio | 23. Female Changing Room | 30. Male Ice Bath Plunge | 37. Football Table |
| 3. Jetzo Jets | 10. Skate Park | 17. Indoor Kid's Play Area | 24. Male Sauna | 31. Female Ice Bath Plunge | 38. Arcade Games |
| 4. Sun Loungers Area | 11. Jogging Track | 18. Indoor Kid's Climbing Wall | 25. Female Sauna | 32. Indoor VR Golf | 39. Kitchens |
| 5. Splash Pad | 12. Zen Garden | 19. Indoor Kid's Ball Pool Slide | 26. Male Steam Room | 33. Multi Purpose Hall | 40. Coffee Bar |
| 6. Kids Pool | 13. Outdoor Yoga | 20. Indoor Kid's Activity Area | 27. Female Steam Room | 34. Library Wall | 41. Bathrooms For People of Determination |
| 7. Basketball Court | 14. Gym Cardio Area | 21. Indoor Kid's Monkey Bar | 28. Male Relaxation Area | 35. Co-Working Space | |



ROOFTOP FLOOR

- | | |
|-------------------------|-----------------------|
| 1. Infinity Pool | 8. Outdoor Meditation |
| 2. Jaxx | 9. Lift Lobby |
| 3. Sun Loungers Area | 10. Cabana |
| 4. Barbecue Area | |
| 5. Outdoor Seating Area | |
| 6. Outdoor Dining Area | |
| 7. Outdoor Yoga | |

Get In Touch

We'd love to hear from you. Contact us and let's discuss all your property needs.

Uruk Properties Head Office

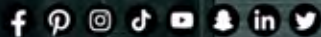
Tel: +971 4 263 0888

Mob: +971 56 400 1413

Email: info@urukproperties.com

Office 1001, DAMAC Smart Heights
7 Al Nahar 2 St., - Barsha Heights - Dubai

URUK
PROPERTIES



UrukProperties

www.urukproperties.com