

An aerial photograph of a coastline, showing a mix of dark blue water and light-colored land. In the foreground, there are concentric ripples on the water's surface, suggesting a stone or object has been dropped. The overall tone is muted and atmospheric.

OCEAN POINT

RASHID YACHTS & MARINA

EMAAR

A Unique Heritage
Sails Into The Future





Rashid Yachts & Marina

Rashid Yachts & Marina is the new global destination for discerning yacht owners to experience Dubai's buzzing scene in an elegant environment where beauty and luxury collide. Designed to encapsulate the ultimate modern waterfront architecture, it combines luxury residences and a full-service marina with an appealing mix of restaurants and shops, creating a unique definition of living at sea.

Genesis Promenades

QE2 Hotel

World-Class Superyacht Marina

Signature Hotels

World-Class
Superyacht Hub

The new Marina at Rashid Yachts & Marina offers convenient, hassle-free access to Dubai, accommodating 430 wet berths for yachts up to 100m long with a range of flexible berthing options, from a single night through to seasonal and annual stays.





Dubai's Signature
Nautical Luxury

In the
Heart of it All

A luxurious residential haven with modern amenities, beautiful scenery, and access to exciting local hotspots, Rashid Yachts & Marina is the perfect place to relax and explore in proximity to some of Dubai's most exciting attractions.

Downtown Dubai

Al Sabkha Gold Souq

Dubai Mall

Dubai Museum

Dubai International Airport

Heritage Village



Rashid Yachts & Marina's
Epicentre of Elegance



Where Elegance Anchors
in Dubai's Heart



Welcome to
Ocean Point



Your Gateway to
**Sophisticated
Urban Serenity**

Picture your mornings greeted by nature's soothing sounds, bathed in Dubai's golden sunlight, with a sense of being at the pulse of something truly special. Located within Rashid Yachts & Marina, Ocean Point exemplifies contemporary sophistication masterfully intertwined with the serene allure of life amidst Dubai's rich legacy.

Designed for those seeking an elevated lifestyle, this modern community is a harmonious blend of luxury, convenience, and the peaceful embrace of a modern world amidst nature's tranquility.





Lush Views that
**Captivate
& Inspire**

At Ocean Point, residents are treated to a daily panorama that captivates from sunrise to sunset. Expansive vistas stretch out, encompassing verdant landscapes, the lively pool area, and the distinct skyline of Dubai Downtown in the distance.

This visual symphony presents a striking contrast between the serene beauty of nature and the polished glamour of city life.

OCEAN POINT

BRAND STRATEGY & MARKETING

- ① Marina Promenade
- ② Seagate
- ③ Seascape
- ④ Clearpoint
- ⑤ Butj View axis / Canal Pool
- ⑥ High Street local shops & cafe
- ⑦ Marina
- ⑧ Sunridge



Captivating Vistas
Enriching Your Every Day



Timeless Grace
and Sophistication









Blending Modern Living
With Natural Grace





Iconic Dubai At Your Door

Being an Ocean Point resident means having unparalleled access to Dubai's most iconic spots. From the rich history of Port Rashid and Rashid Yachts & Marina's bustling Central Canal Pool and promenade to the commercial hub at the Dubai World Trade Centre, you're always amidst the action.

With direct access to the surrounding verdant landscapes and parks, Ocean Point is an ideal combination of natural beauty and urban conveniences. Whether you're socialising or just taking a moment for yourself, the community pools and state-of-the-art facilities will make sure that every outdoor experience is one to remember.

Amenities

Tailored to Your Lifestyle

At Ocean Point, amenities are crafted for the discerning resident. Whether revitalizing in the state-of-the-art indoor and outdoor gyms, engaging in a spirited tennis match, or unwinding by the luxurious pool, every choice enhances your living experience.

Multi-Use Games Area

Indoor & Outdoor Gyms Plaza

Barbeque Area

Multipurpose Room

Kids' Indoor & Outdoor Play Areas



Get In Touch

We'd love to hear from you. Contact us and let's discuss all your property needs.

Uruk Properties Head Office

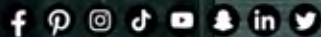
Tel: +971 4 263 0888

Mob: +971 56 400 1413

Email: info@urukproperties.com

Office 1001, DAMAC Smart Heights
7 Al Nahar 2 St., - Barsha Heights - Dubai

URUK
PROPERTIES



UrukProperties

www.urukproperties.com

OCEAN POINT

RASHID YACHTS & MARINA

FLOOR PLAN - BLDG 1

EMAAR

OCEAN POINT

RASHID YACHTS & MARINA



THE OCEAN POINT



THE OCEAN POINT



EMAAR

EMAAR

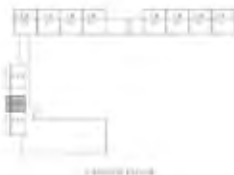
OCEAN POINT

RASHID YACHTS & MARINA

BUILDING 01 1 BEDROOM-1A

UNIT	SIZE	PRICE
UNIT 101	1,100 SQ. FT.	1,100,000 AED
UNIT 102	1,100 SQ. FT.	1,100,000 AED
UNIT 103	1,100 SQ. FT.	1,100,000 AED

KEY PLAN



KEY SECTION



LAYOUT



FLOOR PLAN 1. All dimensions are in imperial and metric, and measured from finish to finish excluding construction tolerances. 2. All materials, dimensions, and drawings are approximate only. 3. Information is subject to change without notice, at developer's absolute discretion. 4. Actual area may vary from the stated area. 5. Drawings not to scale. 6. All images used are for illustrative purposes only and do not represent the actual size, features, specifications, fittings, and furnishings. 7. The developer reserves the right to make revisions / alterations, at its absolute discretion, without any liability whatsoever.

OCEAN POINT

RASHID YACHTS & MARINA

BUILDING 01 1 BEDROOM-1B

UNIT	TYPE	
UNIT 401	1 BR 1 BATH	754 sq. ft.
UNIT 402	1 BR 1 BATH	754 sq. ft.
UNIT 403	1 BR 1 BATH	754 sq. ft.
UNIT 404	1 BR 1 BATH	754 sq. ft.
UNIT 405	1 BR 1 BATH	754 sq. ft.
UNIT 406	1 BR 1 BATH	754 sq. ft.
UNIT 407	1 BR 1 BATH	754 sq. ft.
UNIT 408	1 BR 1 BATH	754 sq. ft.

KEY PLAN



UNIT 401



UNIT 402



UNIT 403

KEY SECTION



LAYOUT



FLOOR PLAN 1. All dimensions are in imperial and metric, and measured from finish to finish excluding construction tolerances. 2. All materials, dimensions, and drawings are approximate only. 3. Information is subject to change without notice, at developer's absolute discretion. 4. Actual area may vary from the stated area. 5. Drawings not to scale. 6. All images used are for illustrative purposes only and do not represent the actual size, features, specifications, fittings, and furnishings. 7. The developer reserves the right to make revisions / alterations, at its absolute discretion, without any liability whatsoever.

OCEAN POINT

RASHID YACHTS & MARINA

BUILDING 01 1 BEDROOM-1B

UNITS	212, 312, 412, 512, 612
UNIT AREA	50.7 (50.5) - 100.0 (99.7)
TERRACE AREA	0.0 (0.0) - 100.0 (99.9)
UNIT + TERRACE	50.7 (50.5) - 100.0 (99.7)

KEY PLAN



100-00 CONDO



110-00 CONDO

KEY SECTION



100-00 CONDO

LAYOUT



110-00 CONDO



FLOOR PLAN 1. All dimensions are in imperial and metric, and measured from finish to finish excluding construction tolerances. 2. All materials, dimensions, and drawings are approximate only. 3. Information is subject to change without notice, at developer's absolute discretion. 4. Actual area may vary from the stated area. 5. Drawings not to scale. 6. All images used are for illustrative purposes only and do not represent the actual size, features, specifications, fittings, and furnishings. 7. The developer reserves the right to make revisions / alterations, at its absolute discretion, without any liability whatsoever.

OCEAN POINT

RASHID YACHTS & MARINA

BUILDING 01 1 BEDROOM-1D

UNIT	FYB	
UNIT AREA	EST. AREA	DISCOUNT
UNIT AREA	EST. AREA	DISCOUNT
UNIT AREA	EST. AREA	DISCOUNT

KEY PLAN



UNIT 1000

KEY SECTION



LAYOUT



FLOOR PLAN 1. All dimensions are in imperial and metric, and measured from finish to finish excluding construction tolerances. 2. All materials, dimensions, and drawings are approximate only. 3. Information is subject to change without notice, at developer's absolute discretion. 4. Actual area may vary from the stated area. 5. Drawings not to scale. 6. All images used are for illustrative purposes only and do not represent the actual site, features, specifications, fittings, and furnishings. 7. The developer reserves the right to make revisions / alterations, at its absolute discretion, without any liability whatsoever.

OCEAN POINT

RASHID YACHTS & MARINA

BUILDING 01 1 BEDROOM-1F

UNIT	111	
UNIT AREA	36.27 SQM	388.46 SQ FT
COVERED AREA	33.33 SQM	358.40 SQ FT
COVERED BAL	30.48 SQM	328.53 SQ FT

KEY PLAN



111 UNIT

KEY SECTION



LAYOUT



FLOOR PLAN 1. All dimensions are in imperial and metric, and measured from finish to finish excluding construction tolerances. 2. All materials, dimensions, and drawings are approximate only. 3. Information is subject to change without notice, at developer's absolute discretion. 4. Actual area may vary from the stated area. 5. Drawings not to scale. 6. All images used are for illustrative purposes only and do not represent the actual size, features, specifications, fittings, and furnishings. 7. The developer reserves the right to make revisions / alterations, at its absolute discretion, without any liability whatsoever.

OCEAN POINT

RASHID YACHTS & MARINA

BUILDING 01 1 BEDROOM-1G

UNITS	750, 742, 736, 582, 590, 482, 490, 582, 550, 682, 690, 782, 790, 882, 890
UNIT AREA	600 SQ.FT. 612 SQ.FT.
COVERED AREA	600 SQ.FT. 612 SQ.FT.
COVERED AREA	600 SQ.FT. 612 SQ.FT.



KEY PLAN



FLOOR PLAN 1. All dimensions are in imperial and metric, and measured from finish to finish excluding construction tolerances. 2. All materials, dimensions, and drawings are approximate only. 3. Information is subject to change without notice, at developer's absolute discretion. 4. Actual area may vary from the stated area. 5. Drawings not to scale. 6. All images used are for illustrative purposes only and do not represent the actual size, features, specifications, fittings, and furnishings. 7. The developer reserves the right to make revisions / alterations, at its absolute discretion, without any liability whatsoever.

OCEAN POINT

RASHID YACHTS & MARINA

BUILDING 01 1 BEDROOM-1H

UNITS:	101, 201, 205, 301, 305, 401, 405, 501
	505, 601, 605, 701, 705, 801, 805
TYPE:	APARTMENT
STATUS:	UNDER CONSTRUCTION
DATE:	2023



FLOOR PLAN 1. All dimensions are in imperial and metric, and measured from finish to finish excluding construction tolerances. 2. All materials, dimensions, and drawings are approximate only. 3. Information is subject to change without notice, at developer's absolute discretion. 4. Actual area may vary from the stated area. 5. Drawings not to scale. 6. All images used are for illustrative purposes only and do not represent the actual site, features, specifications, fittings, and furnishings. 7. The developer reserves the right to make revisions / alterations, at its absolute discretion, without any liability whatsoever.

OCEAN POINT

RASHID YACHTS & MARINA

BUILDING 01

1 BEDROOM-II

UNIT	SIZE	
UNIT AREA	96.07 SQ.M	1,029 SQ.FT.
COVERED AREA	111.15 SQ.M	1,197 SQ.FT.
UNIT BALCONY	7.48 SQ.M	80.7 SQ.FT.

KEY PLAN



UNIT 10101

KEY SECTION



LAYOUT



FLOOR PLAN 1. All dimensions are in imperial and metric, and measured from finish to finish excluding construction tolerances. 2. All materials, dimensions, and drawings are approximate only. 3. Information is subject to change without notice, at developer's absolute discretion. 4. Actual area may vary from the stated area. 5. Drawings not to scale. 6. All images used are for illustrative purposes only and do not represent the actual size, features, specifications, fittings, and furnishings. 7. The developer reserves the right to make revisions / alterations, at its absolute discretion, without any liability whatsoever.

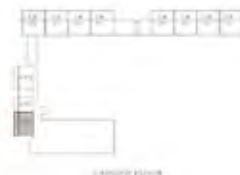
OCEAN POINT

RASHID YACHTS & MARINA

BUILDING 01 2 BEDROOM-1A

UNITS:	01/1	
DECK AREA:	18.42 SQ.M.	195.96 SQ.FT.
TERRACE AREA:	4.17 SQ.M.	44.86 SQ.FT.
TOTAL AREA:	22.59 SQ.M.	240.82 SQ.FT.

KEY PLAN



KEY SECTION



LAYOUT



FLOOR PLAN 1. All dimensions are in imperial and metric, and measured from finish to finish excluding construction tolerances. 2. All materials, dimensions, and drawings are approximate only. 3. Information is subject to change without notice, at developer's absolute discretion. 4. Actual area may vary from the stated area. 5. Drawings not to scale. 6. All images used are for illustrative purposes only and do not represent the actual size, features, specifications, fittings, and furnishings. 7. The developer reserves the right to make revisions / alterations, at its absolute discretion, without any liability whatsoever.

OCEAN POINT

RASHID YACHTS & MARINA

BUILDING 01 2 BEDROOM-1B

UNIT	TYPE	NO. OF BEDS
001-002	1 BR	1
003-004	2 BR	2
005-006	3 BR	3
007-008	4 BR	4
009-010	5 BR	5
011-012	6 BR	6
013-014	7 BR	7
015-016	8 BR	8
017-018	9 BR	9
019-020	10 BR	10
021-022	11 BR	11
023-024	12 BR	12
025-026	13 BR	13
027-028	14 BR	14
029-030	15 BR	15
031-032	16 BR	16
033-034	17 BR	17
035-036	18 BR	18
037-038	19 BR	19
039-040	20 BR	20
041-042	21 BR	21
043-044	22 BR	22
045-046	23 BR	23
047-048	24 BR	24
049-050	25 BR	25
051-052	26 BR	26
053-054	27 BR	27
055-056	28 BR	28
057-058	29 BR	29
059-060	30 BR	30
061-062	31 BR	31
063-064	32 BR	32
065-066	33 BR	33
067-068	34 BR	34
069-070	35 BR	35
071-072	36 BR	36
073-074	37 BR	37
075-076	38 BR	38
077-078	39 BR	39
079-080	40 BR	40
081-082	41 BR	41
083-084	42 BR	42
085-086	43 BR	43
087-088	44 BR	44
089-090	45 BR	45
091-092	46 BR	46
093-094	47 BR	47
095-096	48 BR	48
097-098	49 BR	49
099-100	50 BR	50
101-102	51 BR	51
103-104	52 BR	52
105-106	53 BR	53
107-108	54 BR	54
109-110	55 BR	55
111-112	56 BR	56
113-114	57 BR	57
115-116	58 BR	58
117-118	59 BR	59
119-120	60 BR	60
121-122	61 BR	61
123-124	62 BR	62
125-126	63 BR	63
127-128	64 BR	64
129-130	65 BR	65
131-132	66 BR	66
133-134	67 BR	67
135-136	68 BR	68
137-138	69 BR	69
139-140	70 BR	70
141-142	71 BR	71
143-144	72 BR	72
145-146	73 BR	73
147-148	74 BR	74
149-150	75 BR	75
151-152	76 BR	76
153-154	77 BR	77
155-156	78 BR	78
157-158	79 BR	79
159-160	80 BR	80
161-162	81 BR	81
163-164	82 BR	82
165-166	83 BR	83
167-168	84 BR	84
169-170	85 BR	85
171-172	86 BR	86
173-174	87 BR	87
175-176	88 BR	88
177-178	89 BR	89
179-180	90 BR	90
181-182	91 BR	91
183-184	92 BR	92
185-186	93 BR	93
187-188	94 BR	94
189-190	95 BR	95
191-192	96 BR	96
193-194	97 BR	97
195-196	98 BR	98
197-198	99 BR	99
199-200	100 BR	100

KEY PLAN



101 (2000)



102 (2000)

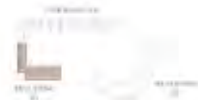


103 (2000)

KEY SECTION



LAYOUT



FLOOR PLAN 1. All dimensions are in imperial and metric, and measured from finish to finish excluding construction tolerances. 2. All materials, dimensions, and drawings are approximate only. 3. Information is subject to change without notice, at developer's absolute discretion. 4. Actual area may vary from the stated area. 5. Drawings not to scale. 6. All images used are for illustrative purposes only and do not represent the actual size, features, specifications, fittings, and furnishings. 7. The developer reserves the right to make revisions / alterations, at its absolute discretion, without any liability whatsoever.

EMAAR

OCEAN POINT

RASHID YACHTS & MARINA

BUILDING 01 2 BEDROOM-1C

UNIT:	101	
COVERED AREA:	18.07 (62.34) M ²	196.07 (674.91) SQ. FT.
PERMITTED AREA:	17.41 (62.34) M ²	186.97 (657.77) SQ. FT.
TOTAL AREA:	17.41 (62.34) M ²	186.97 (657.77) SQ. FT.
DRY:	13.51, 8.47, 1.67, 1.97, 8.97, 7.97, 3.97	
COVERED AREA:	1.67 (5.82) M ²	18.07 (62.34) SQ. FT.
PERMITTED AREA:	1.67 (5.82) M ²	18.07 (62.34) SQ. FT.
TOTAL AREA:	1.67 (5.82) M ²	18.07 (62.34) SQ. FT.

KEY PLAN



FLOOR PLAN 1. All dimensions are in imperial and metric, and measured from finish to finish excluding construction tolerances. 2. All materials, dimensions, and drawings are approximate only. 3. Information is subject to change without notice, at developer's absolute discretion. 4. Actual area may vary from the stated area. 5. Drawings not to scale. 6. All images used are for illustrative purposes only and do not represent the actual size, features, specifications, fittings, and furnishings. 7. The developer reserves the right to make revisions / alterations, at its absolute discretion, without any liability whatsoever.

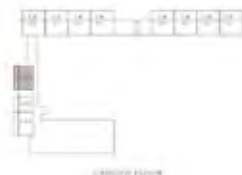
OCEAN POINT

RASHID YACHTS & MARINA

BUILDING 01 2 BEDROOM-2A

UNITS:	001	
DECK AREA:	18.67 SQ.M.	14.07 SQ.FT.
FERRISSE AREA:	18.67 SQ.M.	14.07 SQ.FT.
TOTAL AREA:	37.34 SQ.M.	28.14 SQ.FT.

KEY PLAN



KEY SECTION



LAYOUT



FLOOR PLAN 1. All dimensions are in imperial and metric, and measured from finish to finish excluding construction tolerances. 2. All materials, dimensions, and drawings are approximate only. 3. Information is subject to change without notice, at developer's absolute discretion. 4. Actual area may vary from the stated area. 5. Drawings not to scale. 6. All images used are for illustrative purposes only and do not represent the actual size, features, specifications, fittings, and furnishings. 7. The developer reserves the right to make revisions / alterations, at its absolute discretion, without any liability whatsoever.

OCEAN POINT

RASHID YACHTS & MARINA

BUILDING 01 2 BEDROOM-2C

UNIT	POS	
UNIT AREA	108 SQ.M.	1157 SQ.FT.
COVERED AREA	104 SQ.M.	1117 SQ.FT.
OPEN AREA	4 SQ.M.	43 SQ.FT.
DRIFT	740, 674, 491, 741, 500, 791, 484	
UNIT AREA	108 SQ.M.	1157 SQ.FT.
COVERED AREA	104 SQ.M.	1117 SQ.FT.
OPEN AREA	4 SQ.M.	43 SQ.FT.

KEY PLAN



KEY SECTION

LAYOUT



FLOOR PLAN 1. All dimensions are in imperial and metric, and measured from finish to finish excluding construction tolerances. 2. All materials, dimensions, and drawings are approximate only. 3. Information is subject to change without notice, at developer's absolute discretion. 4. Actual area may vary from the stated area. 5. Drawings not to scale. 6. All images used are for illustrative purposes only and do not represent the actual site, features, specifications, fittings, and furnishings. 7. The developer reserves the right to make revisions / alterations, at its absolute discretion, without any liability whatsoever.

EMAAR

OCEAN POINT

RASHID YACHTS & MARINA

BUILDING 01 2 BEDROOM-4A

UNITS	199	
COVERED AREA	176.00 SQ.M.	113.04 SQ.FT.
TERRACE AREA	11.11 SQ.M.	68.41 SQ.FT.
COURTYARD	116.70 SQ.M.	719.04 SQ.FT.
DEPTH	31.0, 11.0, 31.0, 31.0, 31.0	
UNIT AREA	197.11 SQ.M.	121.94 SQ.FT.
TERRACE AREA	11.11 SQ.M.	68.41 SQ.FT.
TOTAL AREA	208.22 SQ.M.	130.35 SQ.FT.

KEY PLAN



101 FLOOR



102 TO 400 (COMMON)



103 TO 104 (COMMON)

KEY SECTION



LAYOUT



FLOOR PLAN 1. All dimensions are in imperial and metric, and measured from finish to finish excluding construction tolerances. 2. All materials, dimensions, and drawings are approximate only. 3. Information is subject to change without notice, at developer's absolute discretion. 4. Actual area may vary from the stated area. 5. Drawings not to scale. 6. All images used are for illustrative purposes only and do not represent the actual size, features, specifications, fittings, and furnishings. 7. The developer reserves the right to make revisions / alterations, at its absolute discretion, without any liability whatsoever.

OCEAN POINT

RASHID YACHTS & MARINA

BUILDING 01 3 BEDROOM-1A

UNIT:	100	
NET AREA:	1,427 SQ.M.	15,477 SQ.FT.
FLOOR AREA:	8,400 SQ.M.	90,427 SQ.FT.
TOTAL AREA:	10,227 SQ.M.	110,331 SQ.FT.

KEY PLAN



KEY SECTION



LAYOUT



FLOOR PLAN 1. All dimensions are in Imperial and metric, and measured from finish to finish excluding construction tolerances. 2. All materials, dimensions, and drawings are approximate only. 3. Information is subject to change without notice, at developer's absolute discretion. 4. Actual area may vary from the stated area. 5. Drawings not to scale. 6. All images used are for illustrative purposes only and do not represent the actual size, features, specifications, fittings, and furnishings. 7. The developer reserves the right to make revisions / alterations, at its absolute discretion, without any liability whatsoever.

OCEAN POINT

RASHID YACHTS & MARINA

BUILDING 01 3 BEDROOM-1D

UNITS	255, 191, 200, 194, 205, 201, 202
GROSS AREA	154 SQ.M. / 1661 SQ.FT.
FURNISHED AREA	144 SQ.M. / 1554 SQ.FT.
COVERED BALCONY	100 SQ.M. / 1076 SQ.FT.



KEY PLAN



KEY SECTION



LAYOUT



FLOOR PLAN 1. All dimensions are in imperial and metric, and measured from finish to finish excluding construction tolerances. 2. All materials, dimensions, and drawings are approximate only. 3. Information is subject to change without notice, at developer's absolute discretion. 4. Actual area may vary from the stated area. 5. Drawings not to scale. 6. All images used are for illustrative purposes only and do not represent the actual size, features, specifications, fittings, and furnishings. 7. The developer reserves the right to make revisions / alterations, at its absolute discretion, without any liability whatsoever.

OCEAN POINT

RASHID YACHTS & MARINA

BUILDING 01 3 BEDROOM-2A

UNIT#	211, 311, 411, 511, 611
NET AREA	154 SQ.M. / 1661 SQ.FT.
PERMITTED AREA	144 SQ.M. / 1554 SQ.FT.
COVERED AREA	149 SQ.M. / 1607 SQ.FT.

KEY PLAN



KEY SECTION



LAYOUT



FLOOR PLAN 1. All dimensions are in imperial and metric, and measured from finish to finish excluding construction tolerances. 2. All materials, dimensions, and drawings are approximate only. 3. Information is subject to change without notice, at developer's absolute discretion. 4. Actual area may vary from the stated area. 5. Drawings not to scale. 6. All images used are for illustrative purposes only and do not represent the actual size, features, specifications, fittings, and furnishings. 7. The developer reserves the right to make revisions / alterations, at its absolute discretion, without any liability whatsoever.

OCEAN POINT

RASHID YACHTS & MARINA

BUILDING 01 3 BEDROOM-2D

UNITS	122	
COPY AREA	14375 SQ.M.	14375 SQ.M.
FLOOR AREA	46133 SQ.M.	11807 SQ.FT.
TOTAL AREA	189442 SQ.M.	486111 SQ.FT.

KEY PLAN



KEY SECTION



LAYOUT



FLOOR PLAN 1. All dimensions are in imperial and metric, and measured from finish to finish excluding construction tolerances. 2. All materials, dimensions, and drawings are approximate only. 3. Information is subject to change without notice, at developer's absolute discretion. 4. Actual area may vary from the stated area. 5. Drawings not to scale. 6. All images used are for illustrative purposes only and do not represent the actual site, features, specifications, fittings, and furnishings. 7. The developer reserves the right to make revisions / alterations, at its absolute discretion, without any liability whatsoever.

OCEAN POINT

RASHID YACHTS & MARINA

TOWNHOUSE

TH - 1A

UNIT	FLOOR	UNIT AREA	TOTAL AREA	TOTAL SQ. FT.
UNIT AREA	UNIT FLOOR	UNIT AREA	TOTAL AREA	TOTAL SQ. FT.
UNIT AREA	UNIT FLOOR	UNIT AREA	TOTAL AREA	TOTAL SQ. FT.
UNIT AREA	UNIT FLOOR	UNIT AREA	TOTAL AREA	TOTAL SQ. FT.
UNIT AREA	UNIT FLOOR	UNIT AREA	TOTAL AREA	TOTAL SQ. FT.

KEY PLAN



KEY SECTION



LAYOUT



FLOOR PLAN 1. All dimensions are in Imperial and metric, and measured from finish to finish excluding construction tolerances. 2. All materials, dimensions, and drawings are approximate only. 3. Information is subject to change without notice, at developer's absolute discretion. 4. Actual area may vary from the stated area. 5. Drawings not to scale. 6. All images used are for illustrative purposes only and do not represent the actual size, features, specifications, fittings, and furnishings. 7. The developer reserves the right to make revisions / alterations, at its absolute discretion, without any liability whatsoever.

OCEAN POINT

RASHID YACHTS & MARINA

TOWNHOUSE

TH - 1B

UNIT:	7000	7007
OFFICE AREA:	0847 (192.24)	2197 (542.41)
FURNISHED AREA:	1644 (42.41)	4040 (92.12)
TOTAL AREA:	2491 (562.65)	6237 (1393.53)



KEY PLAN



KEY SECTION



LAYOUT



FLOOR PLAN 1. All dimensions are in imperial and metric, and measured from finish to finish excluding construction tolerances. 2. All materials, dimensions, and drawings are approximate only. 3. Information is subject to change without notice, at developer's absolute discretion. 4. Actual area may vary from the stated area. 5. Drawings not to scale. 6. All images used are for illustrative purposes only and do not represent the actual site, features, specifications, fittings, and furnishings. 7. The developer reserves the right to make revisions / alterations, at its absolute discretion, without any liability whatsoever.

OCEAN POINT

RASHID YACHTS & MARINA

TOWNHOUSE

TH - 1C

UNIT	TOTAL	
UNIT AREA	206.14 SQ.M	2190.81 SQ.FT
FLOORING AREA	104.14 SQ.M	1121.74 SQ.FT
COVERED AREA	284.14 SQ.M	3064.47 SQ.FT
DECK	TOTAL	
UNIT AREA	206.14 SQ.M	2190.81 SQ.FT
FLOORING AREA	11.43 SQ.M	1232.44 SQ.FT
COVERED AREA	144.44 SQ.M	1558.00 SQ.FT

KEY PLAN



KEY SECTION



LAYOUT



FLOOR PLAN 1. All dimensions are in imperial and metric, and measured from finish to finish excluding construction tolerances. 2. All materials, dimensions, and drawings are approximate only. 3. Information is subject to change without notice, at developer's absolute discretion. 4. Actual area may vary from the stated area. 5. Drawings not to scale. 6. All images used are for illustrative purposes only and do not represent the actual site, features, specifications, fittings, and furnishings. 7. The developer reserves the right to make revisions / alterations, at its absolute discretion, without any liability whatsoever.

OCEAN POINT

RASHID YACHTS & MARINA

TOWNHOUSE

TH - 1D

UNIT:	7004	
VECT AREA:	366.82 SQ.M	3930.14 SQ.FT
TERRACE AREA:	46.90 SQ.M	507.44 SQ.FT
TOTAL AREA:	413.72 SQ.M	4437.58 SQ.FT
GRID:	T104	
VECT AREA:	366.82 SQ.M	3930.14 SQ.FT
TERRACE AREA:	46.90 SQ.M	507.44 SQ.FT
TOTAL AREA:	413.72 SQ.M	4437.58 SQ.FT

KEY PLAN



KEY SECTION



LAYOUT



FLOOR PLAN 1. All dimensions are in Imperial and metric, and measured from finish to finish excluding construction tolerances. 2. All materials, dimensions, and drawings are approximate only. 3. Information is subject to change without notice, at developer's absolute discretion. 4. Actual area may vary from the stated area. 5. Drawings not to scale. 6. All images used are for illustrative purposes only and do not represent the actual size, features, specifications, fittings, and furnishings. 7. The developer reserves the right to make revisions / alterations, at its absolute discretion, without any liability whatsoever.

Get In Touch

We'd love to hear from you. Contact us and let's discuss all your property needs.

Uruk Properties Head Office

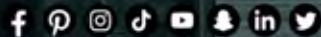
Tel: +971 4 263 0888

Mob: +971 56 400 1413

Email: info@urukproperties.com

Office 1001, DAMAC Smart Heights
7 Al Nahar 2 St., - Barsha Heights - Dubai

URUK
PROPERTIES



UrukProperties

www.urukproperties.com